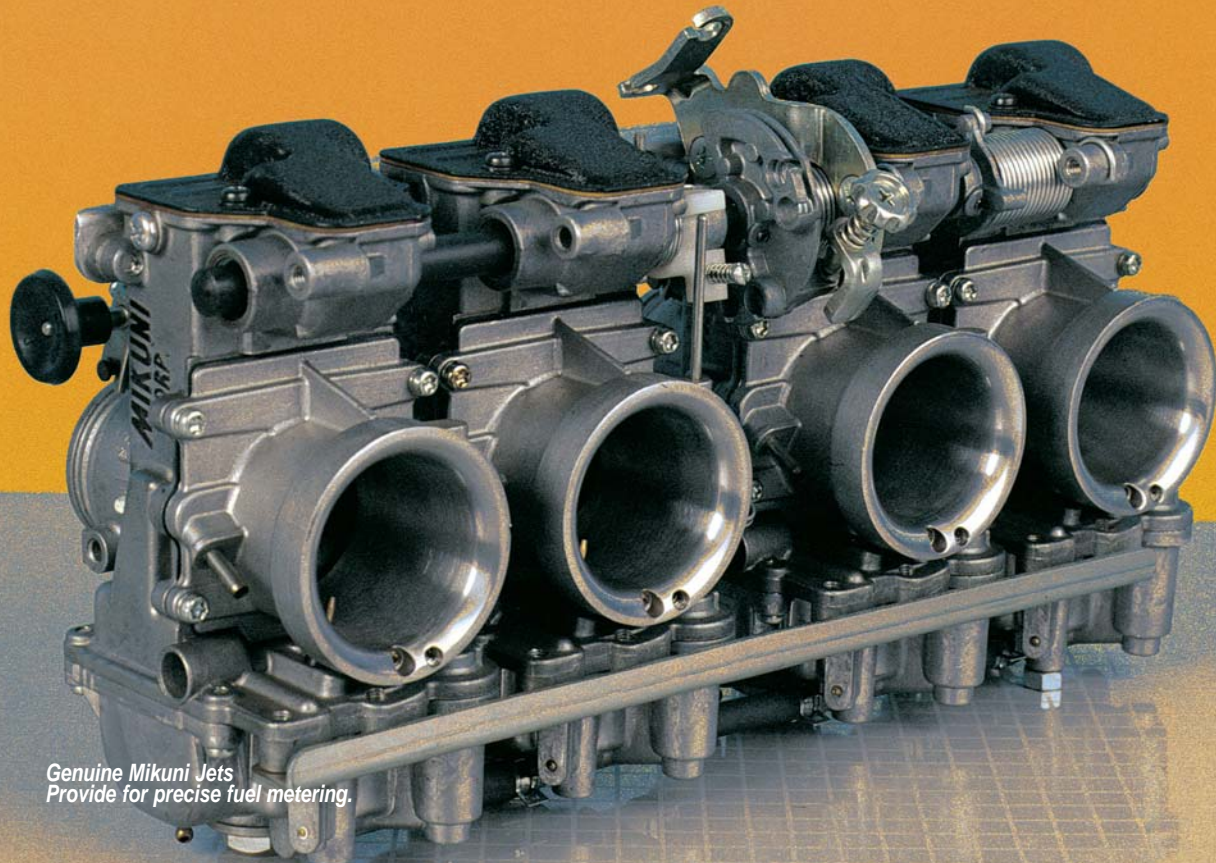


RS SMOOTHBORE CARBURETORS



*Genuine Mikuni Jets
Provide for precise fuel metering.*

The Mikuni RS Series Carburetors were designed and built in response to the needs of the world's top motorcycle road race and drag race teams. They required carburetors which would satisfy the precise fuel metering demands and high flow volume required by highly modified race engines. And yet, also provide the smooth, controllable throttle response that is needed by any rider pushing his motorcycle to its limits on the race track and under any high performance applications. The carburetors need to meter fuel correctly under a wide range of atmospheric conditions and engine tuning modifications while being easily accessible for trackside tuning changes which need to be made quickly.

Designed for in-line four cylinder performance motorcycle applications, the Mikuni RS Series Radial Flat Slide Carburetors offer superior horsepower gains with their maximum flowing smoothbore induction tract and radial flat slide design. An adjustable accelerator pump system helps to provide instant throttle response, particularly in the lower RPM range. The RS Series Carburetors feature a compact design which is 25% lighter than other performance carburetors, offers quick needle jet adjustment, and uses readily available standard Mikuni jets.

1. Accelerator Pump Adjust Screw

Sets ON and OFF operation of accelerator pump in relation to throttle slide position.

2. Throttle Return Spring

A choice of positioning pegs allows adjustment of spring tension.

3. Idle Adjustment Screw

Controls engine idle speed.

4. Adjustable Accelerator Pump

Squirts fuel into carburetor venturi when throttle is opened to improve engine response.

5. Starter System

Provides fuel enrichment for cold engine starting.

6. Accelerator Pump Spray Nozzle

Shoots fuel directly into the intake tract for immediate engine response.

7. Jet Needle Clip

Has easy adjustment feature for quick tuning.

8. Flat Throttle Valve Design

Provides the strongest signal for precise and instantaneous throttle response.

9. Float Bowl Vent

Allows atmospheric pressure into float bowl for fuel flow.

10. Smooth Bore Venturi

Produces the optimum air and fuel mixture flow at all RPMs.

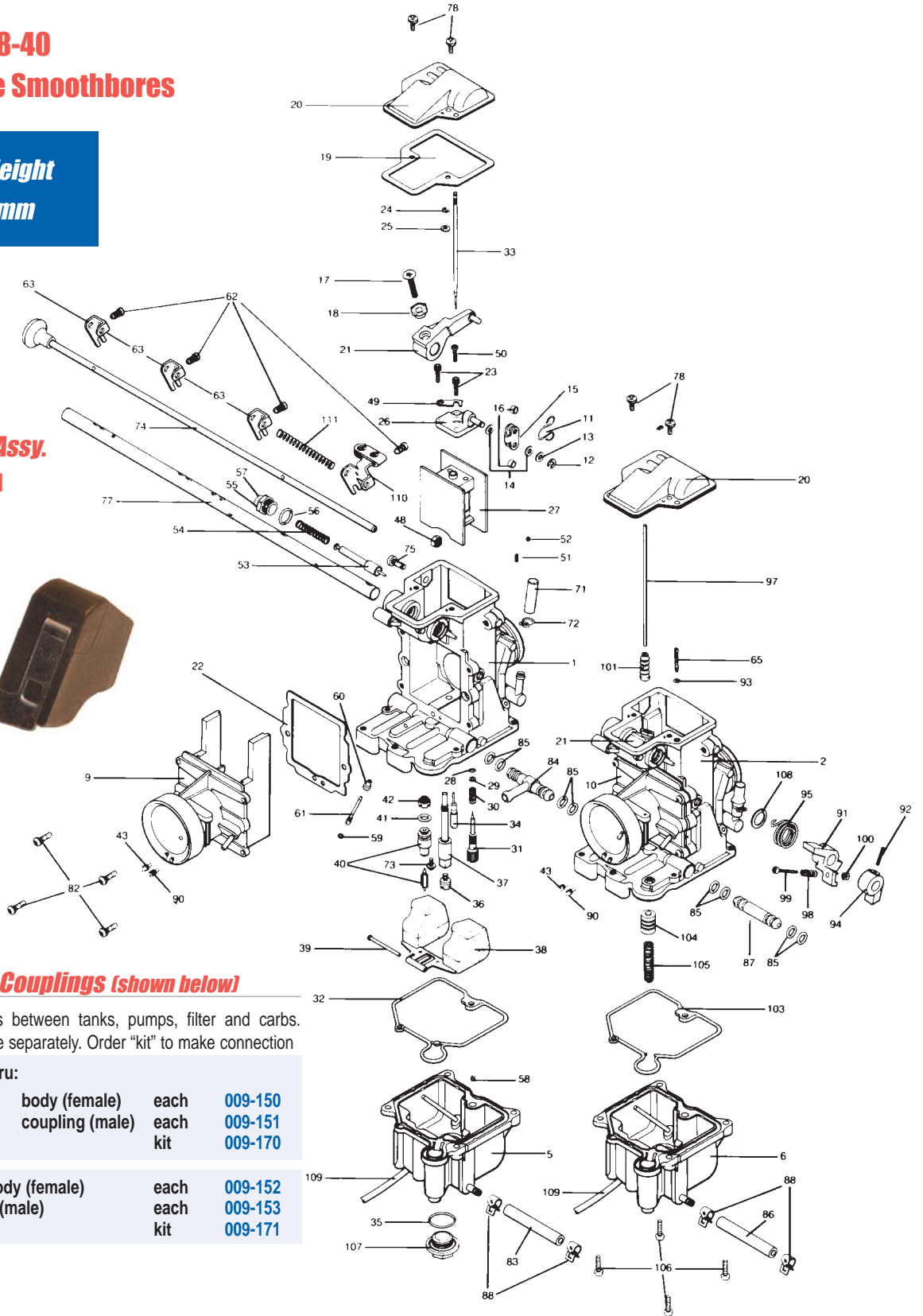
11. Pilot Air Jet

Use in conjunction with the Pilot Fuel Screw for tuning of mixture at idle to 1/4 throttle.

RS-34-36-38-40 Radial Slide Smoothbores

Float Height
17±1 mm

Item 38 Float Assy.
Order No. 007-141



In-Line Fuel Line Couplings (shown below)

For quick disconnections between tanks, pumps, filter and carbs. Components are available separately. Order "kit" to make connection

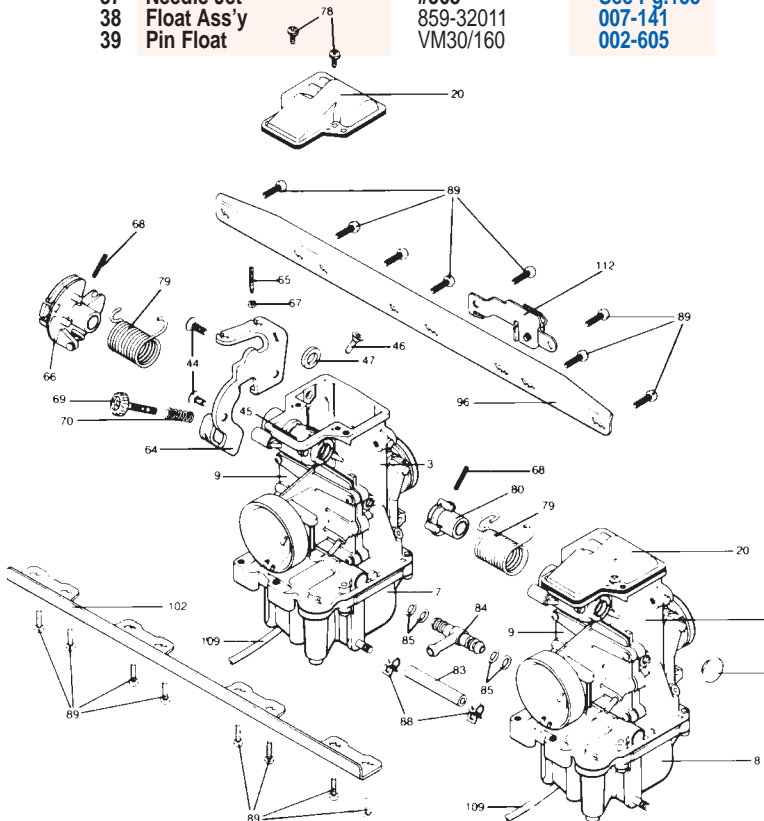
5/16" fittings straight thru:

body (female)	each	009-150
coupling (male)	each	009-151
	kit	009-170

5/16" fittings shut-off body (female)	each	009-152
5/16" Shut-off coupling (male)	each	009-153
	kit	009-171

No.	Description	Mikuni No.	Order No.
1	Mixing Body	N/A	
2	Mixing Body	N/A	
3	Mixing Body	N/A	
4	Mixing Body	N/A	
5	Float Chamber Body	N/A	
6	Float Chamber Body	N/A	
7	Float Chamber Body	N/A	
8	Float Chamber Body	N/A	
9	Funnel	N/A	
10	Funnel	N/A	
11	Clip, T.V. Lever	N/A	
12	E-Ring, T.V. Lever	BSW28/70	002-355
13	Washer, T.V. Lever	M10/56	002-632
14	Packing, T.V. Lever	N/A	
15	Plate, T.V. Lever	N/A	
16	Ring, T.V. Lever	N/A	
17	Screw, Sync. Lock	C5=0518	007-117
18	Ring, Sync. Adjust	TM36/06	007-118
19	Gasket, Top Cover	TM36/3	007-119
20	Top Cover, Carb	N/A	
21	Lever Ass'y, T.V. #1 #2	N/A	
22	Gasket, A/Funnel	TM36/42	007-658
23	Screw, 2.5mm Allen	739-13001	007-123
24A	E-Ring, RS34-36	VM20-269	002-083
24B	E-Ring, RS38-40	BS32/126	002-455
25A	Washer, Needle Clip 34-36	VM26/315	007-124
25B	Washer, Needle Clip 38-40	826-03002	007-267
26	Connector Plate, T.V.	N/A	
27A	Valve, Throttle 34-36	N/A	} Sold direct from Mikuni
27B	Valve, Throttle 38-40 (Throttle Valves are 2.0 Cutaway)	N/A	
28	O-Ring, Fuel Screw	N133.037	
29	Washer, Fuel Screw	VM12/33	002-856
30	Spring, Fuel Screw	N133.206	007-137
31	Screw, Pilot Fuel	604-26003	007-138
32	O-Ring, F.C.B. #1-3-4	616-94020	007-140
33	Jet Needle	9 Series	See Pg.152
34	Pilot Jet	VM28/486	See Pg. 157
35	O-Ring, Drain Plug	VM28/254	002-531
36	Main Jet	N100.604	See Pg.156
37	Needle Jet	#568	See Pg.155
38	Float Ass'y	859-32011	007-141
39	Pin Float	VM30/160	002-605

No.	Description	Mikuni No.	Order No.
40	Needle Valve Ass'y	N149.040	See Pg.127
41	O-Ring, Needle Valve	KV/10	002-709
42	Filter, Needle Valve	VM18/233	002-606
43	Main Air Jet (Plugged)	BS30/97	
44	Screw, Crank Bracket	C5=0512	007-150
45	Lever Ass'y, T.V. #3	N/A	
46	Screw, Lever Lock	N/A	
47	Packing, Shaft	N/A	
48	Hexagon, Locknut	N/A	
49	Plate, Needle Retainer	N/A	
50	Screw, T.V. Plate	N/A	
51	Spring, Starter Shaft	B21/29	007-155
52	Ball Starter Shaft	B21/28	007-156
53	Plunger, Starter	N151.038	
54	Spring, Starter	VM16/42	002-671
55	Guide Holder, Starter	N/A	
56	O-Ring, Starter	N138.198	007-160
57	Cap, Starter	N/A	
58	Starter Jet	VM17/1002	See Pg. 127
59	O-Ring, A/P Nozzle	N124-063	007-163
60	Plug, A/P Nozzle	TM29/14	007-164
61	Pump, Nozzle	TM36/43	007-165
62	Screw, Start Bracket	N158.052	002-659
63	Lever, Starter Shaft	N/A	
64	Bracket, Bell Crank	N/A	
65	Adjust Screw, A/P	TM36/48A	007-168
66	Lever Ass'y, Bell Crank	TM36/31	
67	Hex Nut, A/P	N/A	
68	Pin, Bell Crank	N138.019	007-171
69	Adjuster, Idle	739-55003	007-490
70	Spring, Idle Adjuster	N110.209	002-655
71	Cap, Vacuum Fitting	N148.013	002-646
72	Spring Clip, Vac. Fit.	N/A	
73	Screw, NV Holder	VM13/216	007-174
74	Shaft Ass'y, Starter	N/A	
75	Pan Head Screw	C2-0508-B	002-648
76	Flat Head Screw	N/A	
77A	Shaft, Throttle B/C #3	700-17011	002-904
77B	Shaft, Throttle B/C #1 (Racing use only, Left side bell crank)	700-17012	002-905
77C	Shaft Throttle B/C #3	700-17013	002-906
78	Screw, Top Cover	CW2=0408	007-175
79	Spring, Throttle Rtrn.	TM36/46A	007-204
80	Lever, Rtrn. Spring	N/A	
81	Cap, Shaft End	N/A	
82	Screw, Air Funnel	N/A	
83	Hose, Fuel Connect	888-44003	007-180
84	Inlet Fuel "T"	N/A	
85	O-Ring, Fuel Joint	616-23002	007-182
86	Hose, A/P Fuel	N/A	
87	Joint, Fuel	792-20014	007-184
87A	Joint, Fuel (For RS36-D3, RS38-D19, RS40-D1)	792-20013	007-183
88	Clip, Fuel Hose	E100729-BB	007-185
89	Screw, Bracket	C2=0512-B	002-628
90	Pilot Air Jet	BS30/97	See Pg. 157
91	Lever, A/Pump	TM36/17	007-292
92	Pin, A/P Locate	N/A	
93	O-Ring, A/P Adj.	B30-205	007-188
94	Lever, A/Pump	TM36/18	007-189
95	Spring, A/Pump	TM36/45	007-190
96	Plate, Top Bracket	N/A	
97	Rod, A/Pump	TM36/44	007-192
98	Spring, A/P Adj.	M12F/46A	002-181
99	Screw, A/P Adj.	MC-0316-B	007-193
100	Hexagon Nut, A/P Adj.	N3=03-B	007-194
101	Cap, A/P Rubber	TM36/64	007-195
102	Plate, Lower Bracket	N/A	
103	O-Ring, F.C.B. A/P	616-94021	007-197
104	Plunger, A/Pump 12mm	TM36/60	007-198
105	Spring, A/P 12mm	VM14SC13/89	007-200
106	Screw, Float Bowl	C2=0412-B	007-201
107	Plug, Drain	VM33/77	002-603
108	Ring, A/P Spring	N/A	
109	Hose	N/A	
110	Lever, Starter Cable	TM36/63	007-205
111	Spring, Bracket	730-06027	007-206
112	Bracket, Cable	TM36/61	007-207



Mikuni RS Carburetor Series

Please check the RS Series Application Chart for the particular kit you need. Carburetors are available in 34, 36, 38 and 40 mm bore sizes with different carb spacing for particular bike applications and with different jetting to match engine modifications.

Order No.	Mikuni Kit No.
001-319	RS34-D21-K
001-320	RS36-D3-K
001-321	RS36-D8-K
001-325	RS38-D19-K
001-326	RS38-D35-K
001-331	RS40-D12-K
001-330	RS40-D1-K

Left Side Bell Crank RS Series

Order No.	Mikuni Kit No.
001-322	RS36-D9-K
001-327	RS38-D29-K
001-332	RS40-D7-K

Note: These are guidelines only, other applications may be available. Specifications are subject to change. Only for racing vehicles which may **NEVER** be used upon a highway.

Standard Tuning Specifications

Mikuni Kit Number	Application *(General)	Carb Spacing (Throttle Shaft No.) A-B-C	Spigot (O.D.) MM	Main Jet (N100.604)	Jet Needle (J8-) (Clip Pos.)	Needle Jet #568 (784-13002)	Pilot Jet (VM28/486)	Screw (Turns)
RS34-D31-K (N/A)	YAM FZ 600 ALL	70-80-70 (700-17013)	36	115	9DZH1/9DZH05 (-3)	P-4	17.5	1/4-1/2
RS34-D21-K	GSX-600 88 GSX-R750 86-87 SUZ GS750 ALL KAW KZ 750 ALL Z1-KZ1000***	77-93-77 (700-17011)	40	115 115 115 115 115	9DZH1/9DZH05 (-3)	P-4	17.5	1/4-1/2
RS36-D3-K RS36-D9-K	GSX-600 88 GSX-R 750 88-92 GSX-R1100 87-92, GS1000-1500 KZ 1000***-1100	77-93-77 (700-17011)	42	120 120 130 130	9DZH1/9DZH05 (-3)	P-4	17.5	1/4-1/2
RS38-D35-K	NINJA 900 NINJA 1000 FJ1100-1200 (Requires throttle & cables)	77-85-77 (700-17011)	42 42	135 135	9CHY3/9CHY10 (-2) 135	Y-6	17.5	1/4-1/2
RS38-D19-K RS38-D29-K	GSX-R 750 87-92 GSX-R1100 87-92, GS 1000-1500 (700-17011) KZ 1000***-1100	77-93-77 (700-17011)	42	135 135 135	9CHY3/9CHY10 (-2)	Y-6	17.5	1/4-1/2
RS40-D12-K	NINJA, FJ RACE	77-85-77	44	140	9CHY3/9CHY10	Y-6	17.5	1/4-1/2
RS40-D1-K RS40-D7-K	GSX-R, GS, KZ RACE (air-cooled)	77-93-77 (700-17011)	44	140	9CHY3/9CHY10 (-3)	Y-6	17.5	1/4-1/2

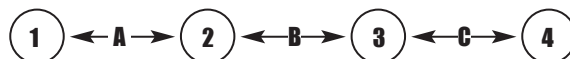
Kit prefix number denotes carb venturi size in millimeters, e.g.: RS36 = 36mm bore.

** Uses left side throttle linkage

** These are guidelines only. Other applications may be available. Contact Sudco. Specifications are subject to change.

* RS34/36 may use jet needle 9DZH05. RS38/40 may use 9CHY10

Carburetor Spacing (mm):



Note: Pre J Models need a mounting flange: Order No. 005-818
(4 per engine)

Item 33 Jet Needles

RS32 - 34 - 36		Order No
Lean ↑	9DZH01 (standard)	007-035
	9DZH03	007-037
Rich ↓	9DZH04	007-038

RS38 - 40		Order No
Lean ↑	9CHY03 (standard)	007-020
	9CHY05	007-022
Rich ↓	9CHY06	007-023

Item 34 Pilot Jet (See Jet table on pg.143)

VM28/486
 SIZES #15 - #50 in increments of 5.
 #12.5, #15, #17.5, #20, #22.5, #25, #27.5, #30, #35, #40, #45, #50.

Item 36 Main Jets (See Jet table on pg.142)

N100/604
 SIZES #50 - #250 in increments of 2.5.
 (e.g. #50, #52.5, #55, #57.5, etc.)

Item 37 Needle Jet #568 (See Jet table on pg.141)

Lean ↑	Y-0	003-663	Lean ↑	0-6	003-650	
	Y-2	003-664		0-8	003-651	
	Y-4	003-665		P-0	003-652	
	Y-6	003-666		P-2	003-653	
	Y-8	003-667		P-4	003-654	
	Z-0	003-668		P-6	003-655	
	Z-2	003-669		Rich ↓	P-8	003-656
	Z-4	003-670				
Rich ↓	Z-6	003-671				

Item 40 Needle Valve Assembly

N149.040	2.0	007-143
N149.040	2.5	007-144
N149.040	2.8 (standard)	007-145



Item 58 Starter Jet

VM17/1002	#15	004-400
	#20	004-402
	#40	004-406
	#60	004-410
	#80	004-414
	#100	004-418

RS Series Air Filter

K&N RC-0981 005-121 (each)

Mikuni Methanol Conversion Kit

The Mikuni Methanol Kit includes all the necessary components, such as main jets, jet needles, needle jets, o-rings, needle valves, etc. to convert your RS38 or RS40 to methanol.

KRS-005 for RS38 and RS40
 Order No. 002-990



Velocity Stacks

Velocity stacks improve the air flow into the carburetors to increase induction efficiency and increase horsepower on racing engines where air filters are not required. Set of 4 velocity stacks fits all Mikuni RS Series Carburetors and other carburetors with 55mm O.D. intake bells. Choose length depending on chassis clearance and desired tuning characteristics (short length—broad high RPM power; medium length—mid RPM power; long length—low RPM POWER).

Length	Order No.
15mm	005-253
30mm	005-250
50mm	005-251
70mm	005-252

Push/Pull Throttle Assembly

A push/pull throttle assembly is required with the use of all Mikuni Racing Carburetors to assure the positive closing of the carburetor throttle slides against the high vacuum pressures encountered in racing engines. The Mikuni Push/Pull Throttle Assembly includes a twist throttle assembly and both throttle cables with adjusters.

Push/Pull Throttle Assembly (complete) 005-230

Replacements for Push/Pull Throttle Assembly:

Throttle Cable - push only	005-230B
Throttle Cable - pull only	005-230A
Throttle Only	005-230C
Throttle Tube	005-230D

