

# KEIHIN PWM CARB

Keihin has just revealed the next step in the two-stroke racing carburetor evolution – the PWM38. The exclusive features built into the new Keihin PWM38 result in improved top-end power, throttle response, and overall two-stroke engine performance. The PWM 38 is the new “Hot Ticket” for 125 to 250cc Road Racing and Shifter Kart applications and 250cc Motocross.



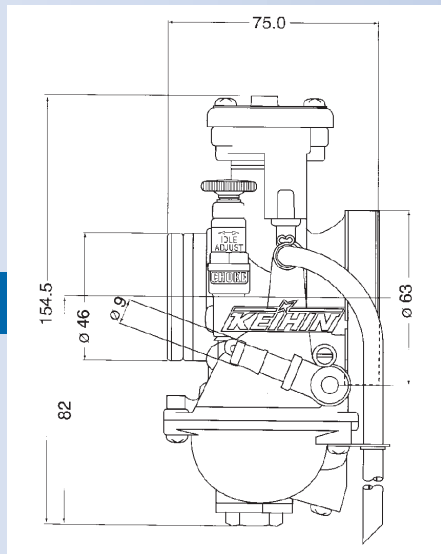
<b>PWM 38 Carburetor</b>	Order No.	016-170
<b>PWM 38 Special Set</b>		016-204

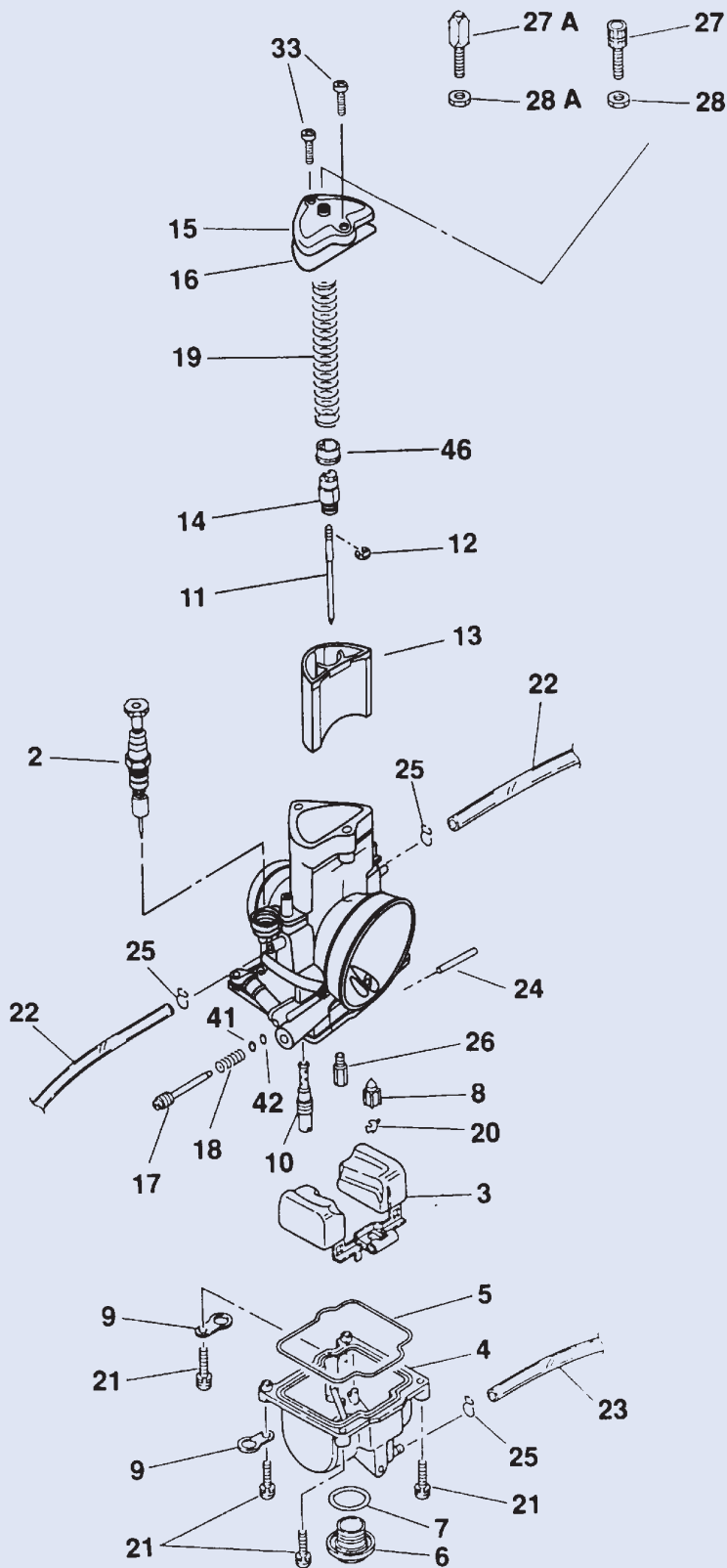
When ordering **Special Set**, please specify application or spec.

## Keihin PWM Carburetor Dimensions

### Standard Jetting

Main Jet	Slow Jet	Jet Needle	T/V
#175	#50	CCJ	6.0





Description	Order No.	
2	Starter Valve Comp	018-201
3	Float	018-202
4	Float Bowl Comp	018-203
5	Gasket Float Bowl	018-113
6	Plug Screw	018-128
7	O-Ring Plug Screw	018-664
8	Float Valve Comp	018-504
9	Anchor Plate	018-204
10	Slow Jet (N424-21)	See pg. 207
11	Jet Needle (N427-48)	See pg. 204
12	Clip, Jet Needle	018-033
13	Throttle Valve	Chart below
14	Cable Holder	018-205
15	Top	018-206
16	Gasket, Top	018-207
17	Air Adjust Screw	018-089
18	Spring	018-090
19	Throttle Valve Spring	018-531
20	Clip, Float Valve	018-674
21	Screw, Float Bowl	018-209
22	Bowl Vent Pipe	018-535
23	Overflow Pipe	018-538
24	Float Pin	018-670
25	Clip	018-098
26	Main Jet (99101-357)	See pg. 206
27	Cable Adjuster	018-210
27a	Cable Adjuster	018-005
27b	Cable Adjuster	018-306
28	Nut Cable Adjuster	018-544
28a	Nut Cable Adjuster	018-008
31	Cable Sealing Cap	018-002
32	Bowl Vent Pipe Comp	NA
33	Screw (Top)	018-211
41	Washer	018-208
42	O-Ring	021-043
46	Collar	018-550

## PWM38 Throttle Valves

Cutaway Mark	Order No.
Richer	4.0 018-252
	5.0 018-253
↑	6.0 018-254 (std)
↓	7.0 018-255
Leaner	8.0 018-256